

# Ball Hall 410 Linux Lab Remote Access Guide

## A. VPN Connection (if not at UMass Lowell)

Link:

<http://www.uml.edu/it/services/get-connected/remote-access/>

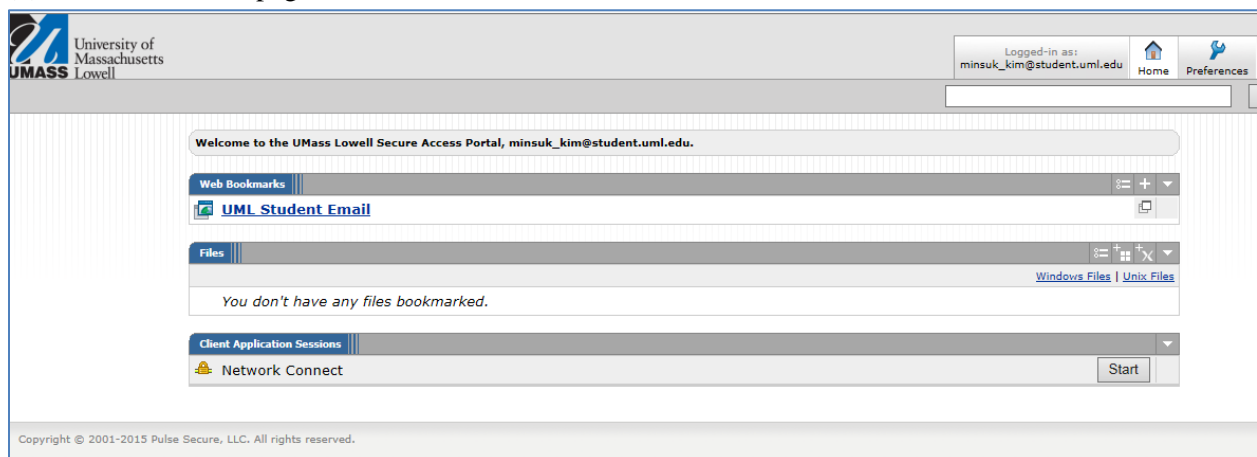
(1) Go to log-in page: [vpn.uml.edu](http://vpn.uml.edu)

(2) Log in with your UML email and password



The screenshot shows a web browser window with a menu bar (File, Edit, View, Favorites, Tools, Help) and the UMass Lowell logo. The main content area displays a welcome message: "Welcome to the UMass Lowell VPN". Below this, there are two input fields labeled "Username" and "Password", and a "Sign In" button. To the right of the input fields, the text reads: "Please sign in to begin your secure session."

(3) You can see web-page for Network Connect, Click 'Start'



The screenshot shows the UMass Lowell Secure Access Portal. The top navigation bar includes the UMass Lowell logo, the user's logged-in status ("minasuk\_kim@student.uml.edu"), and links for "Home" and "Preferences". The main content area features a welcome message: "Welcome to the UMass Lowell Secure Access Portal, minasuk\_kim@student.uml.edu." Below this, there are three sections: "Web Bookmarks" with a link to "UML Student Email", "Files" with a message "You don't have any files bookmarked." and links for "Windows Files" and "Unix Files", and "Client Application Sessions" with a link to "Network Connect" and a "Start" button. The footer contains the copyright notice: "Copyright © 2001-2015 Pulse Secure, LLC. All rights reserved."

(4) Run JuniperSetupClientInstaller.exe, and then wait until completing installation!

In order to continue the operation you need to install a setup client. Please click [here](#) to install setup package. You must enable either ActiveX or Java to run the downloaded setup client.

Once the setup client is installed, please click [here](#) to continue.

Please click [here](#) to login to the realms without Host Checker.

If you do not want to proceed, please click [here](#) to go back.

Do you want to run or save **JuniperSetupClientInstaller.exe** (1.96 MB) from **vpn.umLedu**?

Run

Save

Cancel

✕

## **B. X2Go Set-up in your laptop (ex: Windows 7 Ver.)**

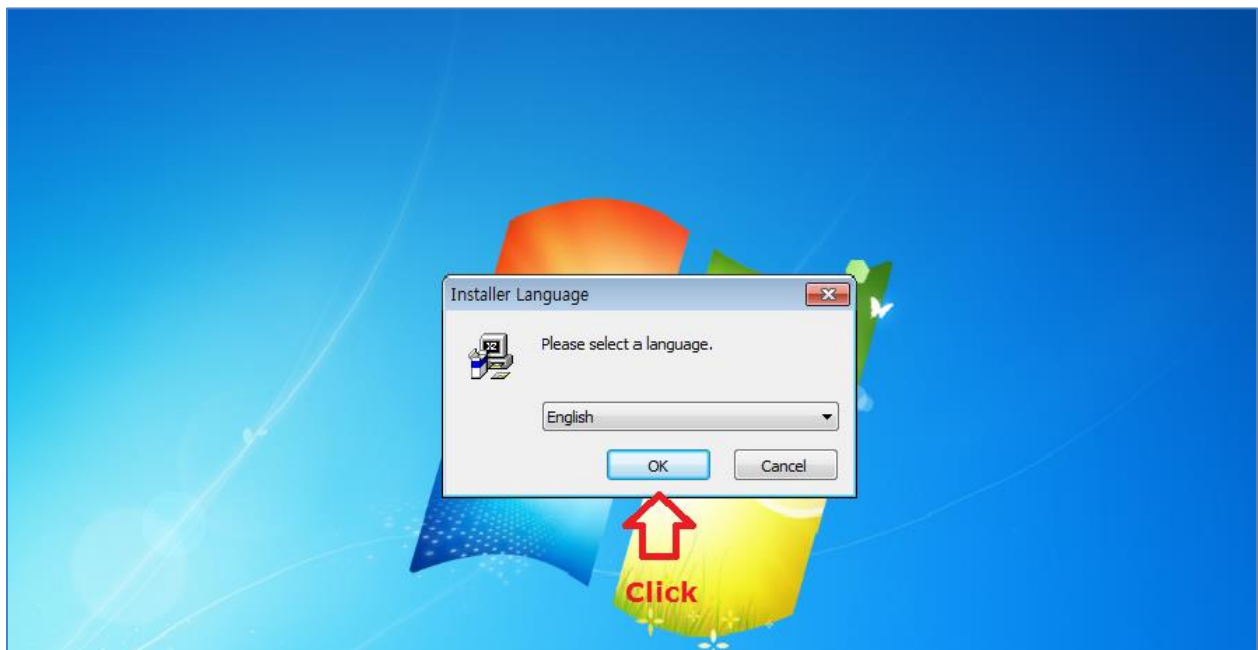
(1) Download X2Go setup file on <http://wiki.x2go.org/doku.php/download:start>

OR Google, Course-Web...

(2) Install X2GoClient in your laptop (ex: Windows Ver.)



(3) Complete installation of X2Go



(4) Click and start 'X2Go client'



(5) You need initial set-up server and session type in session preference.

- Server

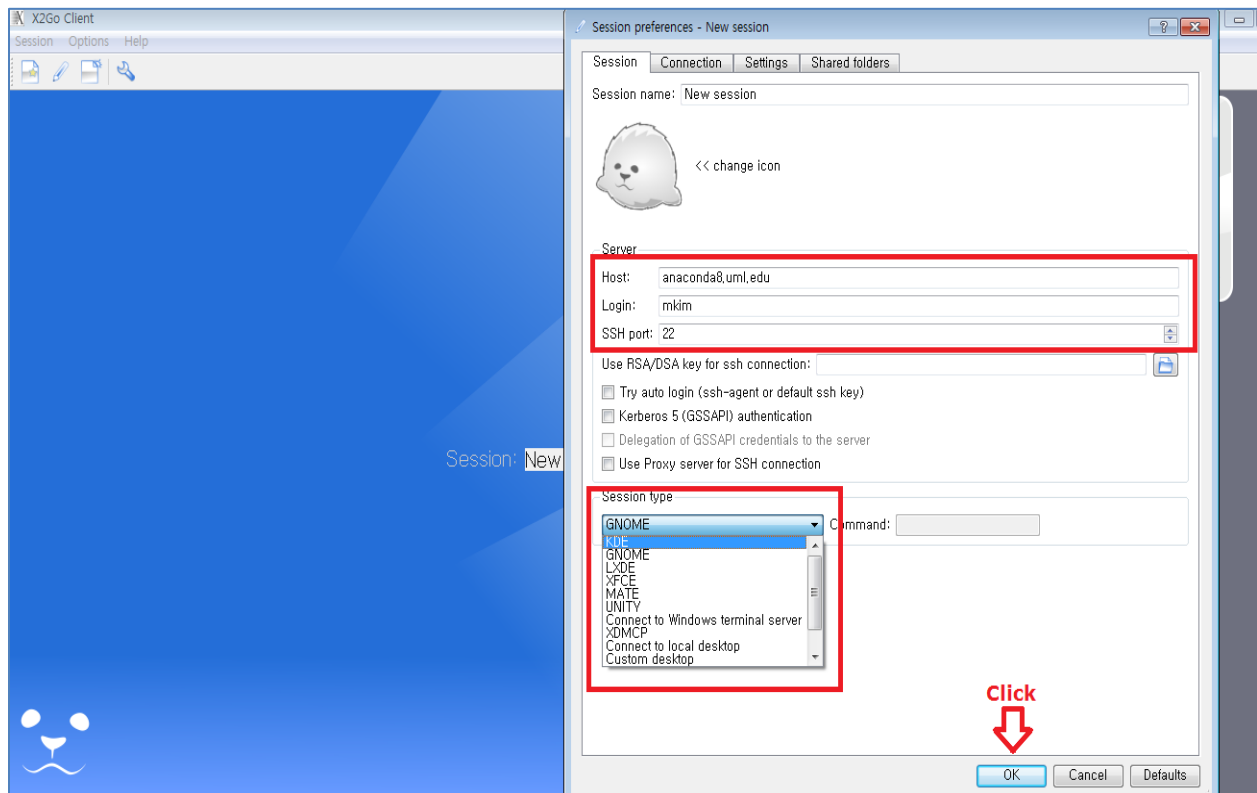
Host: Pick up one of the clients' numbers (anaconda2 ~ anaconda32)

(Please take another one if you have an error to access)

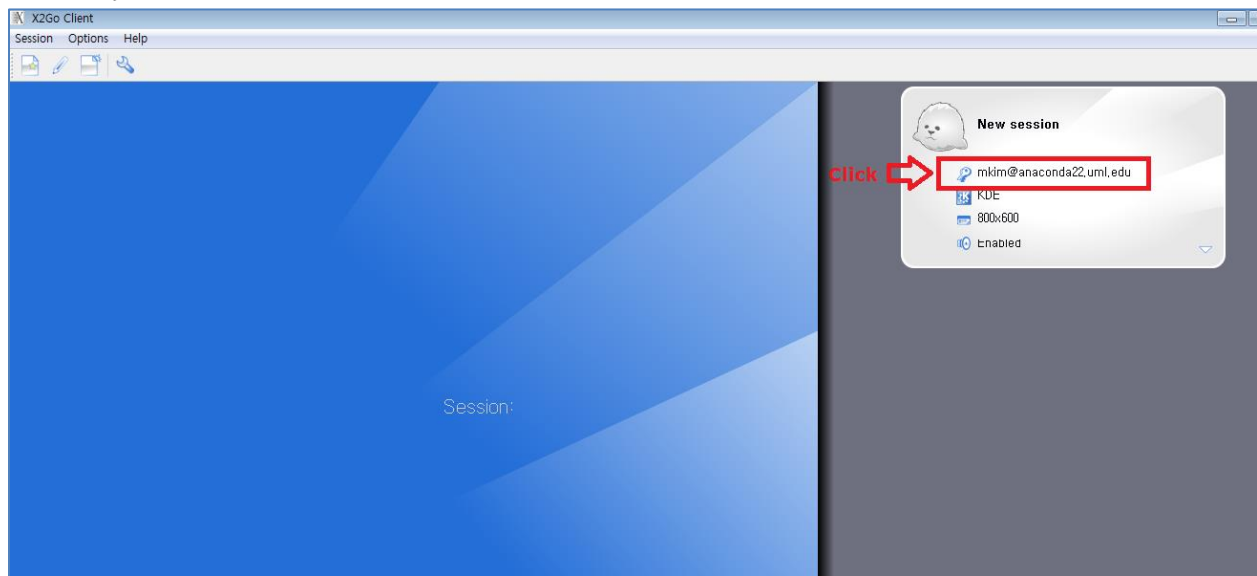
- Login: Username and Password (Ball 410 credentials not school email)
- SSH Port: 22
- Session Type

(Choose MATE type. You may have trouble to access if you take the others)

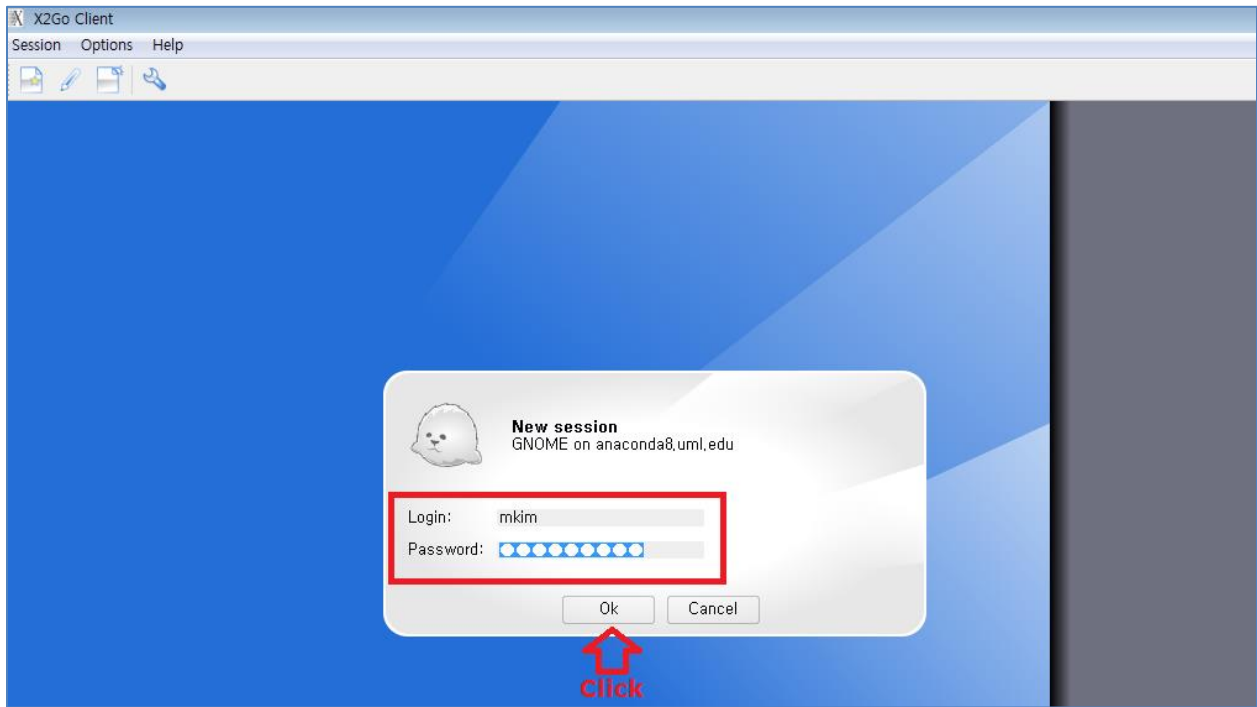
- click "OK"



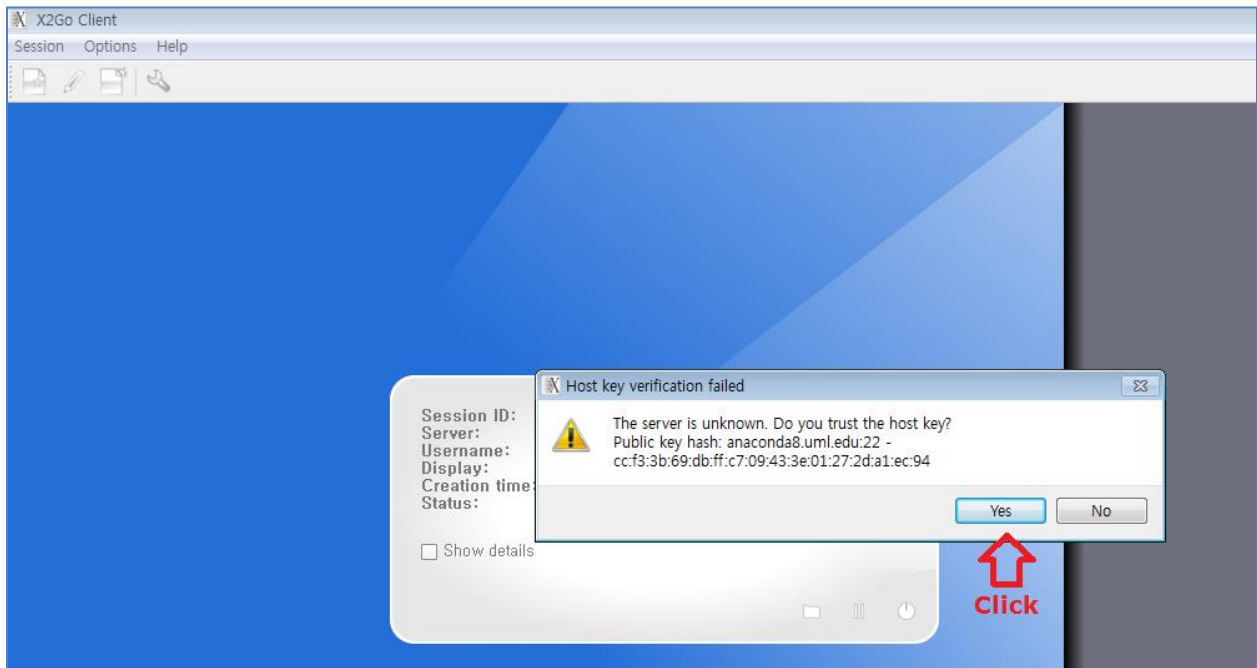
(6) click your session as below,

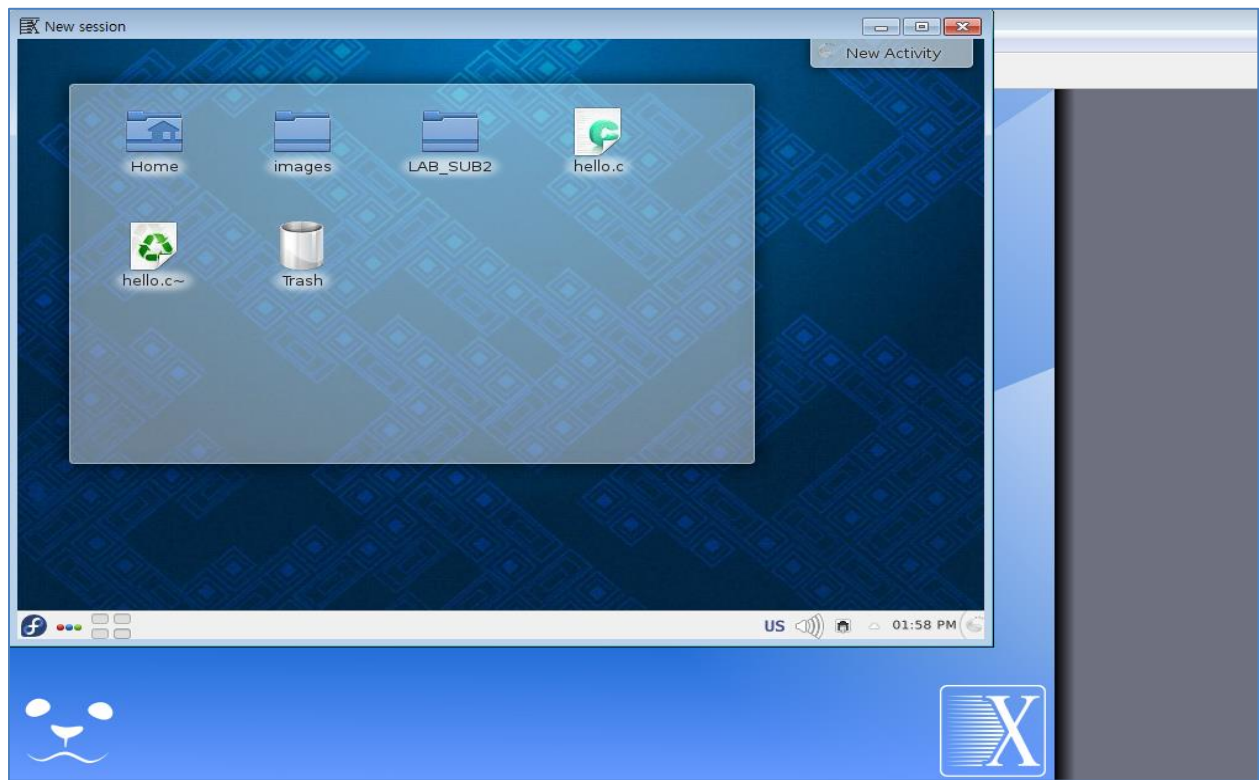


(7) Put your password in your account



(8) If you have a message as below, click “Yes”, and then go logging your account from OFF-Campus





You can access your account in BL410 from OFF-Campus!!